



Your Neighborhood News | Spring 2025

Spring has sprung and the pollen is finally decreasing a bit. The beautiful colors in our neighborhood are making the drive home so relaxing and we see many neighbors working on their lawns to help us continue to keep our neighborhood looking great. To get more up to date information, please consider following Chelsea Woods of Tusawilla on Facebook.

Thank you to everyone who took the time to answer our online survey. Questions, answers, and replies to the survey will be found on our website under the General: News/Announcements tab soon.



Your Community Needs Your Help

In response to the survey and several other suggestions, we would like to fill open committee positions. Interested in volunteering in our neighborhood? We have several areas that could use some volunteers.

Beautification Committee – responsible for reporting status of common areas, suggest recommended changes, recommend homes for Yard of the Month, and coordinate community beautification events, as needed

Welcoming Committee – responsible for recommending items to collect for distribution new residents, creating bags/baskets/items to be given to new residents, delivering items, and staying in touch with new residents for their first year.

Maintenance Committee – responsible for light maintenance in our common areas to include irrigation, mulching, pressure washing, trimming, and other small jobs throughout the year.

Nominating Committee – responsible for making at least as many nominations of candidates as required for election to the Board of Directors as the number of vacancies to be filled. Meet primarily in January.

New Neighborhood Radio Station

from Chelsea Woods Neighbor Tom Stoeckle

We recently launched our community radio station (Tusawilla's 87.9 FM). It is a nonprofit very low power station (part 15 of the FCC) that serves only the local community. (The signal can be heard from Tusawilla road to just past Oviedo HS, but covers the Tusawilla community and Chelsea Woods quite nicely.) We are in full stereo with some of the highest fidelity of any FM station.

We are on the air 24/7 featuring the greatest hits of all time (60's -90's). No rap, no offensive language etc. We have specialty programs with Patrick (60's at 6 pm; 70's at 7; 80's at 8 and 90's at 9; and a 4 hour Retro Saturday night party from 6-10 PM). Glinda hosts lunch with the Beatles every day at Noon Jenna in the evening (10PM - 2 am) features soft and relaxing favorites to end the day. Mornings with Mia are a great way to start the day at 6 AM and we have "Mark in the Dark" at 2 AM to entertain those night owls.



We've lived in Chelsea Woods since 2019 and continue to believe it is one of the best areas to live in. Please give the station a listen (87.9 FM) and [support our local community.]

Oviedoradio879@gmail.com

Firefighters' Memorial Day
Sunday, May 4, 2025

Peace Officers Memorial Day
Thursday, May 15, 2025

Memorial Day
Monday, May 26, 2025

May marks a month of remembering our fallen community members who have served. Seminole County has two beautiful tributes at the County Courthouse (101 Esslinger Way, Sanford)

Peace Officers – Thursday, May 8, 7:30pm

Military - Friday, May 23, 9:00am

Remember on Memorial Day, the families of those who cannot return. Please take a moment on these days to remember their sacrifices as well as their loved ones.

Street Light Out?

Did you know you can report street light outages right on our city's website. Start here to help keep our neighborhood safe.

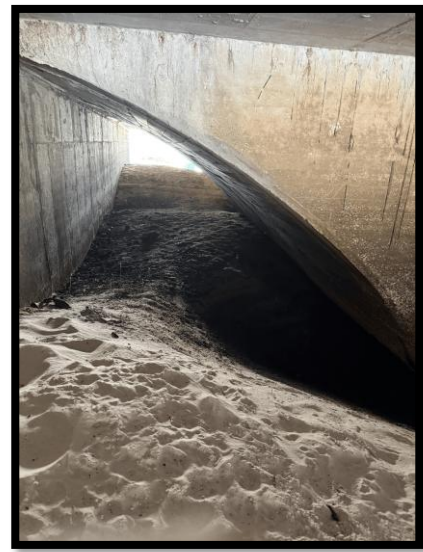
The screenshot shows the City of Winter Springs website. The header includes the city logo and navigation links: Community, Business, Government, and How Do I?. The 'Community' section is expanded, showing links for 'Apply For' (Employment Opportunities, New Utility Service, Permitting Self-Service Portal, Service Termination Request), 'Report' (Street & Area Light Repair), and 'Contact' (City Staff, Mayor & Commission). A red arrow points to the 'Report' link under 'Street & Area Light Repair'. Other sections include 'Find' (Agendas & Minutes, Documents & Forms, Locations & Hours, Parks & Trails, Public Notices, Social Media Policy), 'Listen to' (Committee Meeting Audio, Tonight's Commission meeting), 'Pay For' (Water Bill, Lien Search, Record Requests, Pavilion Rental), and 'Sign Up For' (Alert Winter Springs, City Newsletter, Volunteer Opportunities).



Stormwater News

*Forwarded from
Commissioner Bruce*

I'm pleased to share some good news along with photos from the field. After approximately 18 months of requests, FDOT has begun clearing out the Gee Creek culverts beneath SR 434/419. The attached images provided by the contractor highlight just how blocked these culverts had become.



In some sections, sediment had accumulated up to 6 feet, as evidenced by the staining on the culvert walls now visible after removal. This buildup significantly impaired water flow and posed flooding risks upstream. An interesting observation from the work is when the roadway was widened roughly 20 years ago, FDOT did not remove the original arched bridge structure. Instead, they added large box culverts alongside it. As seen in the photos, this mismatched configuration of the old and new structures reduces hydraulic capacity and likely contributed to sediment buildup.

In the short term, the sediment removal will undoubtedly improve water flow and reduce upstream flood staging at this crossing. ~ **Kevin Sweet, MPA, ICMA-CM, City Manager**

Members from our Board attended the April 28 City Commission meeting where stormwater plans were front and center. To join our community group working on escalating the importance of Pond 59 to the city and the stormwater committee, please contact Board member Rick Mould at rjmm1905@gmail.com



Pond 59 Update

Our Pond neighbors have been busy advocating for proper care and treatment of pond 59. This is the pond located at the south end of the neighborhood surrounded by Tioga, Seneca, and Conesus. The Garone family proposed solar aeration to aid with the surface debris issue at our Annual meeting and is attempting to coordinate pond neighbor communication with the city and HOA Board. Please plan on attending the May 12th City Commission meeting at 6:30pm where stormwater and pond cleanup will be addressed.

The Garones recently received notice from the City that their stormwater team met with the contractor responsible for the aquatic weed control program for this pond and will be developing a plan to address the concerns.

A great resource, Healthy Ponds Guide, was recently added to the General/News and Announcements section of our website.

The Need for Speed



Has anyone else noticed that Seneca Boulevard sees a large number of speed offenders? Could it be that they are going by the limit posted on their car's navigations system instead of the regulatory posted limit? Here is an example of one system showing Seneca as a 30mph zone. What breaks our hearts is seeing someone navigating Seneca at a higher than posted speed then turn on to one of our side roads...a neighbor. Please, for the safety of our children, wildlife and all residents, adhere to the posted limit.

You may have also heard, on Winter Springs Boulevard, there was discussion at an April City Commission meeting to raise the limit back to 30mph. Several community members spoke, the police chief presented data, and ultimately, none of the Commissioners made a motion for the discussed change. Thank you to all who play a part in keeping our surrounding community safe and beautiful to drive in.

New to the Neighborhood?

First of all, Welcome! We are working to revitalize our Welcoming Committee, but wanted you to know we are glad you chose Chelsea Woods to call home. A few quick good to know items:

What is that noise! If you hear a tornado siren on the first Saturday of each month at noon, do not be alarmed. That is the regularly scheduled test time and most of our neighborhood can hear the siren. If you hear it at a different time, please take necessary precautions.

Farmers Market, yes! We have one within walking distance at Oviedo's Friendship Park. Plan on attending for local goods and services on the first and third Saturday mornings of each month.

More information can be found on our website www.chelseawoods.com on the Local Links tab



417 Updates

We are meeting with one of the Seminole County Commissioners in May to discuss the project's current status. If you have any specific questions you'd like us to bring to the meeting, please email thechelseawoodshoa@gmail.com.

For more information on noise walls, please visit <https://www.cfxway.com/purpose-and-planning-of-expressway-noise-walls/>

Parking FAQs

What do I do if I'm having a party or gathering at my home and my street doesn't support on-street parking?

Under City ordinance, police officers may temporarily permit on-street parking where it is not supported for the limited purpose of special events, gatherings, and other public service purposes. Should we determine a safety issue exists, we will enlist your help to remedy the situation.

I have regular service vehicles that come to my home. Are they allowed to park in the street?

Service providers are permitted to park on the street during the times they are performing the services they offer. This exemption may also be granted under the specifications in the ordinance for temporary special occasions where a safety hazard is not created.

My driveway area extends over the sidewalk. Am I allowed to block this portion of the sidewalk to park in my driveway?

No. Sidewalks are passable for ordinary use.

Can I park on the sidewalk?

Your car should be directed on a two-way street. It is illegal to park on a two-way street.

Further information about this and all of the ordinances of the City of Winter Springs website.

Our city website will contain additional information concerning FAQs (Frequently Asked Questions), general direction and assistance, maps, and what you can do to help the police department maintain a safe environment on our roadways. A comprehensive list of city roadways and their individual compatibility with on-street parking is also available for your reference.

On-Street Parking

Winter Springs
Police Department



Street Parking

In order to comply with city ordinances governing on-street parking in the City of Winter Springs, this reference guide has been prepared for your use.

It is intended to provide basic information to the reader to help them understand what is and what is not legal parking. State laws that govern vehicle parking will continue to be enforced. The complete restrictions can be found in Chapter 316, F.S.S., however, they will be referenced in part in this brochure.

City ordinance prohibits parking on any arterial or collector roadway, as determined by the city engineers, or any local roadway with less than 22' of paved parkable width including concrete ribbon or Miami style curbs. Additionally, no vehicle may be parked within 30' of or in any curve with a centerline street radius of 100' or less. Vehicles may also not be parked in any way which creates a safety hazard or impedes the safe flow of emergency vehicle traffic.

Florida law and city ordinance prohibits parking in the following manner:

- In front of a public or private driveway;
- Within 15' of a fire hydrant;
- Within 20' of a crosswalk; at an intersection;
- Within 30' upon the approach to any flashing signal, stop sign, or traffic control signal located at the side of the roadway;
- On any exclusive, properly marked bicycle lane;

- On a sidewalk;
- Within an intersection;
- On a crosswalk or within 10' of a crosswalk;
- Between a safety zone and the adjacent curb or within 30' of points on the curb immediately opposite the end of the safety zone;
- Alongside or opposite any street excavation or obstruction;
- Upon a bridge or other elevated structure;
- Upon a highway or within a highway tunnel;
- On any railroad tracks;
- At any place where official signs prohibit standing, stopping, or parking;
- On any portion of a roadway with a horizontal curve where the centerline street radius is 100' or less as determined by the city engineer, plus the first 30' from both ends of the curve.
- With the left wheels to the curb on a two-laned roadway;
- With the wheels more than 12" from the curb or edge of the roadway;
- Within 3' of any city utility meter.



No parking within 30' of or in any curve with a centerline street radius of 100' or less as determined by engineers.



No parking directly opposite another vehicle where this action could create a choke point for safe emergency vehicle access.



Winter Springs parking information can be downloaded at

<https://www.winterspringsfl.org/media/11536>.

A good rule of thumb in our neighborhood – if there are yellow stripes (solid or dashed) in the center of the road, no parking is allowed on the curb in that area.

Please help people working at or visiting your home understand this rule.

Yards of the Month

Congratulations to the Hopkins, Bishop, and Moyer families for their beautiful yards at 702 Tioga, 1714 Seneca Boulevard. and 1750 Seneca Boulevard. We noticed you taking the time to be sure your yards looked great this season. Thank you for your time and talents! If you would like to help select next month's Yard of the Month, consider volunteering for our Beautification Committee.



Signs, Signs, Everywhere are Signs...

Thank you for taking care of your yards and homes. Please remember to remove any signs left behind in a timely manner. In case you were wondering, the Winter Springs City Code for temporary signs states that they shall not be placed in the easement (between the street and the sidewalk), and they should be removed within three (3) days after the date upon which the sign has fulfilled its purpose (e.g., the scheduled event or occurrence has concluded).

2025 Annual Dues are still being collected. If you still need to pay, please visit our website to see the different payment methods.

What are your dues used for? See a sampling of items to the right.



- Insurance
- Website
- Electricity for north entrance and the fountain at the north end of Seneca
- Water and landscape maintenance for north and south entrances
- PO Box rental
- Annual fees to the state
- Improvements and maintenance of common areas

If you are interested in putting together this (or any other) type of newsletter for our community on a quarterly basis, please contact thechelseawoodshoa@gmail.com.